

MICRO DATA CENTER SOLUTION

Foundation of Digital Future



SOLUTION BENEFITS

Secured Protection

- IP55 rated IT environment, excellent dust resistance and noise reduction capabilities, Anti-condensation design, ensure quiet, secure and stable operation.
- Smart 3in1 (PIN/Finger/RFID) Door access system, prevent unauthorized entry.
- Real-time equipment status monitoring and alarm, avoid delayed response.

Smart Monitoring

- Full sensor communication, all-in-one real time monitoring and management center, minimizing downtime.
- Support remote centralized management and constant monitoring, enhancing operational efficiency and flexibility.
- Upgraded software interface, more suitable for operation insights.

Energy Efficiency

- Various efficient inverter precision air conditioning options provide energy-saving solutions.
- Available 120-240VAC 50/60Hz input under request.
- IP55 rated IT environment, allowing internal deployment of fire system, more cost saving.
- Factory prefab & plug-and-play design enable easy deployment and relocation.

High Flexibility

- LEGO-style modular design allows for easy customization and expansion.
- Factory prefab and plug-and-play design enable easy deployment and relocation, reducing setup time and effort.
- 19" profile guide supports a load 1500kg of capacity, certified by laboratory."



**Always evolving.
Always leading.**

As micro data center leader, we continuously innovate and optimize our solutions to provide best-in-class energy efficiency and a wide range of flexible configurations. With our cutting-edge solutions, we offer unparalleled performance and reliability, making us the ultimate choice for your data center infrastructure projects.



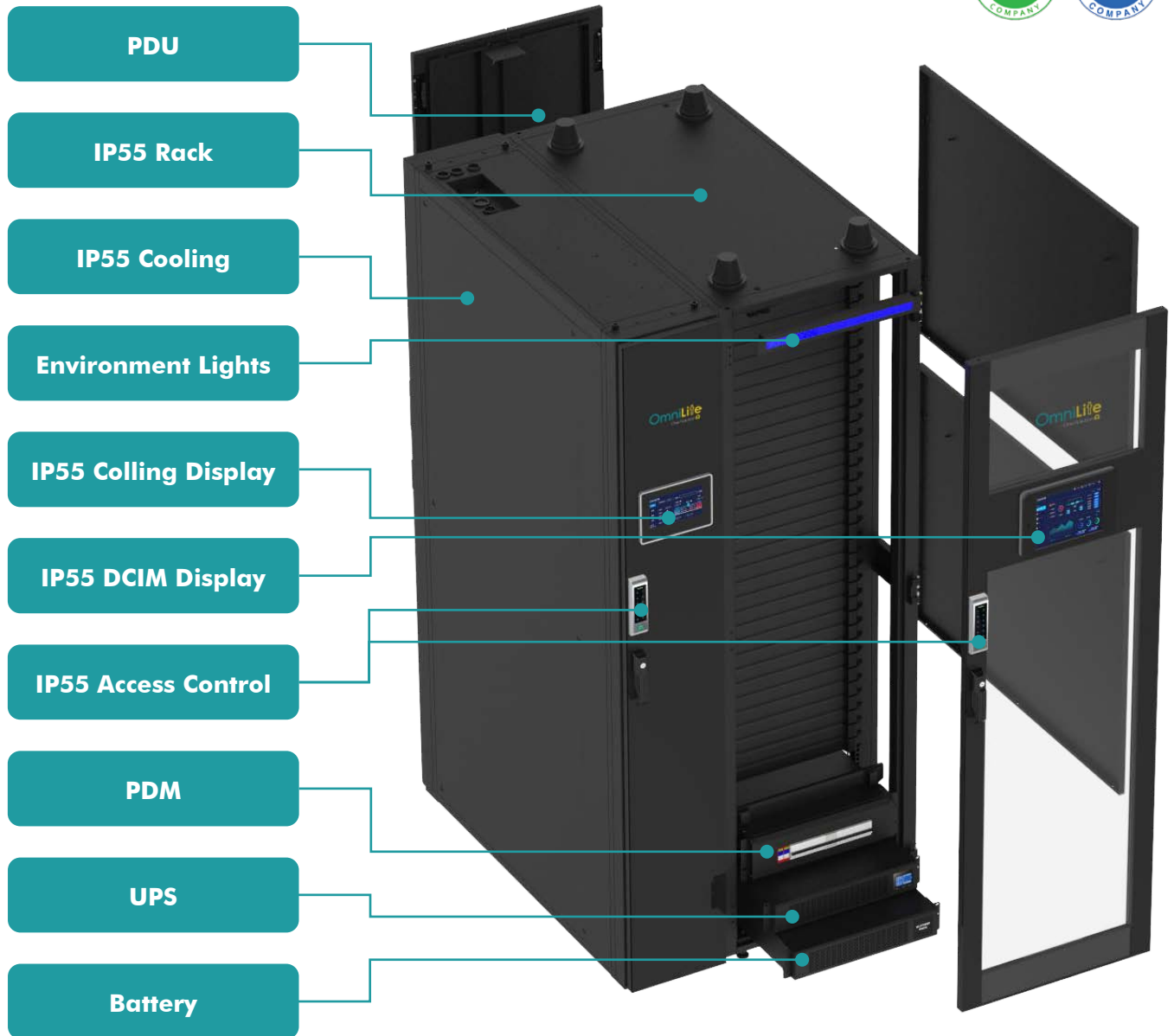
RoHS



CE

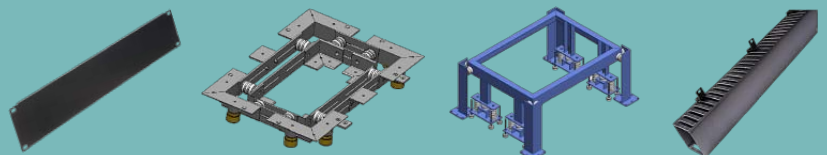
Always evolving. Always leading.

As micro data center leader, we continuously exploring the best combinations between the various modules to optimize our Micro Data Centers and provide the most effective configuration. Each module is a crucial and unique component that plays a vital role in achieving our goals.

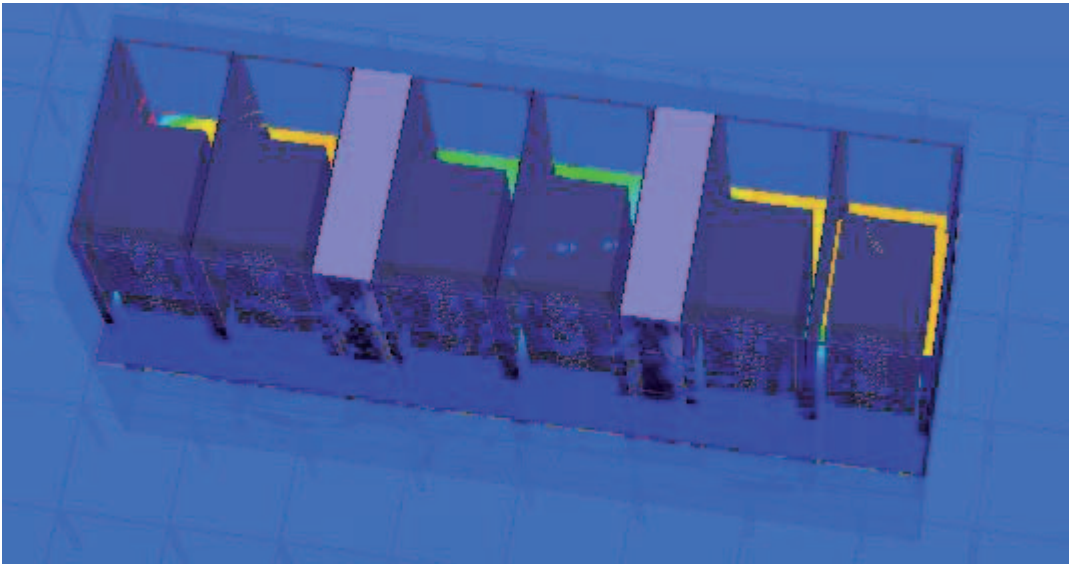


Availables on demand in differents RAL colors as 7001, 7004, 7005, 7021, 7035, 9002, 9005, 9006 and more.

Accessories available as Vertical & Horizontal Wire Organizer, Blanking Panels, Bottom Plinth, Seismic/Vibration Isolator, Lights, infrared sensor, CCTV and more.



The efficiency matters, for a sustainable future.

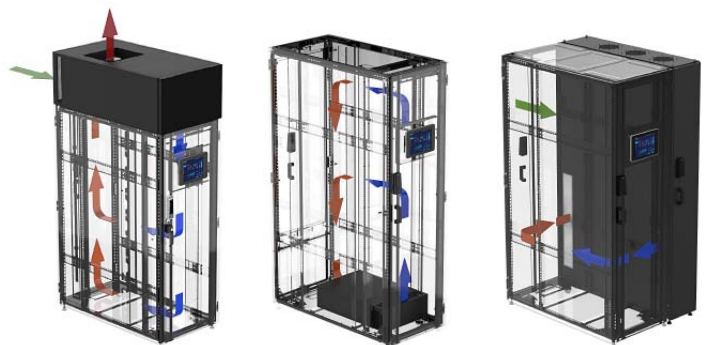


Optimized PUE

Energy efficiency has always been a top priority in our data center design and operations. Our cutting-edge energy-saving technologies and equipment and continually optimized energy management strategy, resulting in a substantial reduction in the PUE value.

Efficient Thermal Management System

Maximizing efficiency with various inverter precision air conditioning with IP55 rated built-in cold-hot aisle sealed cabinet.



Efficient Deployment & Relocation

Factory prefabrication, high integration, plug-and-play design enables quick delivery and deployment.

Lego style modular design, easy to expansion step by step.

The cabinet components including the surface have an electrophoresis primer and anti-corrosion pretreatment.



The unparalleled protections, from inside to outside.

From internal power systems to external physical monitoring, we continuously innovate and optimize our Micro Data Center to provide the most comprehensive protection, making us the safest choice for your data management.



Power Supply Protection

Online double-conversion UPS provides reliable power supply protection and effectively resists risk of sudden power cut.



Environmental Protection

Stable temperature, humidity of IT environment provided by our various types of precision cooling, ensure your business continuous operation.



Real-time Monitoring

Smart monitoring system fully communicate with UPS, cooling, power, and all types of sensor, integration with access control system, provided real-time data at all times.



Enhanced Physical Protection

IP55 rated cabinets equipped with Intelligent 3 in1 access control system can effectively prevent unauthorized entry including invasion, water and dust.

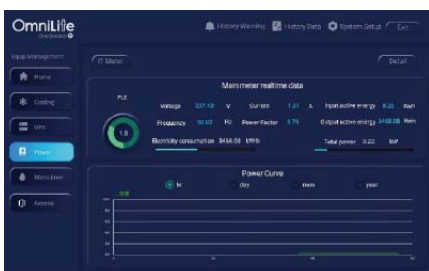
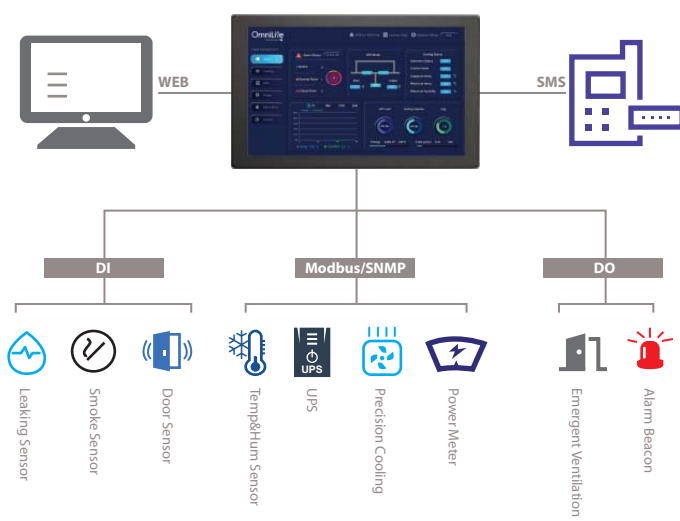


Disaster Protection

Early fire detection system and Fire system combined with graphics processing technology to maximize the protection of your equipment from loss at the early stage of disaster.

The smart monitoring, your instant insights.

Smart monitoring system provide more user-friendly interface, comprehensive local monitoring, and supports various protocols for easy integration with your existing BMS, DCIM, or SCADA system. It allows for remote centralized management and constant monitoring of device status, ensuring the business continuous operation. Protocols available: SNMPv3, IPv6, FTP, SFTP, TFTP, LDAP, Syslog, TCP/IP, HTTP, HTTPS, SMTP, DHCP, DNS, ARP, Telnet, SSL, and SSH.



OmniliLife Model RC87002 is a unique system that allows monitoring all cabinet components and systems.

All types of Configurations, define by yourself.

All kinds of key design aspects, including IT-Rack, precision cooling, UPS, PDU, Battery, Fire system, Monitoring system, it can be configured by yourself. Including but not limited to capacity configuration, redundancy configuration, software modifications, etc.

IP55 Rack

Two different widths (600/800mm), three different heights (24U, 33U and 42U) and 1800Kg loading capacity.



Various Types Cooling

- 1.0 - 3.0kW Wall mount cooling system
- 2.5 - 5.5kW Top mount cooling system
- 3.9 - 12kW Rack mount cooling system
- 5.6 - 10.8kW Inrow packaged cooling system
- 5.6 - 90kW Inrow split cooling system



Rack Mount / Modular UPS

- 3kVA~60kVA rack UPS
- 60 - 200kVA modular UPS rack mount
- 250 - 600kVA modular UPS floor mount



48VDC Modular Rectifier

60A~1200A 48VDC rectifier, with rectifier module / Solar module



VRLA / Lithium Batteries

Compact size in-rack desing. High performance, high efficiency.



Basic / Smart PDU

Max 42 outlets / 63A input current, with environmental monitoring, power monitoring, control, management, lightning protection and other functions

Additional Options



Video Surveillance System



Rack mount fire System



Early Fire Detection System

The flexibility, matching your future precisely.

Micro Data Center Solutions enable individually scalable combinations of all components like IT racks, cooling, power distribution, monitoring and security. flexible and highly standardized concepts can offer the best individual solution for every customer at any stage of the business. You can plan and invest your IT assets step by step while your business grows.



Various predefined configurations, suitable for any of your application.

MDC with Top Package Cooling	MDC with Row Package Cooling	MDC with Rack Split Cooling	MDC with Row Split Cooling
<p>3k - 6k MDC fully integrated with closed rack, package cooling, UPS, battery, power distribution, security, monitoring and fire systems.</p> <p>No complex piping of remote condenser installation.</p>	<p>5k - 10k MDC fully integrated with closed rack, package cooling, UPS, battery, power distribution, security, monitoring and fire systems.</p> <p>No complex piping of remote condenser installation.</p>	<p>3k - 10k MDC fully integrated with closed rack, split cooling, UPS, battery, power distribution, security, monitoring and fire systems.</p> <p>Modular rack cooling flexible for rack oriented MDC plan, expansion and deployment.</p>	<p>6k - 20k MDC fully integrated with closed rack, split cooling, UPS, battery, power distribution, security, monitoring and fire systems.</p> <p>Row cooling seamless integration with rack row and capacity expansion.</p>



Technical Data | IEC Power - 230V/1P/50~60Hz | 400/3P/50~60Hz

Product Model	ATM-03N	ATM-03W	ATM-06E	ATM-06M	ATM-06T	ATM-06F	ATM-06K	ATM-10S	ATM-10G	Configured
Space for IT-U	18U	19U	26U	27U	29U	35U	35U	35U	35U	<= 10 * 42U
Power for IT-KW	2.0	2.4	3.0	3.5	3.5	5.0	5.0	7.0	7.0	<= 15kW/Rack
Redundancy	N	N	N	N	N	N	N	N	N	N / N+1 / 2N
Width -mm	600	600	600	600	600	900	900	900	900	Per Definition
Depth -mm	1100	1100	1100	1200	1200	1200	1200	1200	1200	1200
Height -mm	1200	1590	2000	2000	2000	2000	2000	2000	2000	2000
Weight -kg	166	180	310	362	352	501	511	505	515	Per Definition
IP Level	IP55	IP55	IP55	IP55	IP55	IP55	IP55	IP55	IP55	IP55
Input Power	220-240V/ (*) 1P/50Hz	220-240V/ (*) 1P/50Hz	220-240V/ (*) 1P/50Hz	220-240V/ 1P/50Hz	220-240V/ 1P/50Hz	220-240V/ 1P/50Hz	220-240V/ 1P/50Hz	220-240V/ 1P/50Hz	220-240V/ 1P/50Hz	220-240V/ 1P/50Hz or 318-415V/ 3P/50-60Hz
Breaker Size	16A	32A	63A	63A	63A	63A	63A	63A	63A	Per Definition
Power Section										
UPS -kVA	3.0/6.0	6.0	6.0	6.0	6.0	6.0	6.0	10.0	10.0	3kVA - 200kVA
UPS Type	Rack	Rack	Rack	Rack	Rack	Rack	Rack	Rack	Rack	Rack / Modular
Standard Battery	12V/9AH 16Pcs	12V/9AH 16Pcs	12V/9AH 16Pcs	12V/9AH 16Pcs	12V/9AH 16Pcs	12V/9AH 16Pcs	12V/9AH 16Pcs	12V/9AH 16Pcs	12V/9AH 16Pcs	<= 4hours backup time
Surge Protection	√	√	√	√	√	√	√	√	√	Per Definition
Power Panel	√	√	√	√	√	√	√	√	√	Per Definition
PDU	Basic 8 Slots	Basic 8 Slots	Basic 16 Slots	Basic 16 Slots	Basic 16 Slots	Basic 16 Slots	Basic 16 Slots	Basic 16 Slots	Basic 16 Slots	Basic / Smart(Opt.)
Cooling Section										
Cooling Type	Packaged DX	Packaged DX	Packaged DX	Package DX	Split DX	Split DX	Packaged DX	Split DX	Packaged DX	Packaged DX / Split DX / Chilled Water
Mount Type	Wall	Top	Top	Rack	Rack	Row	Row	Row	Row	Row / Rack / Top
Capacity-kW	3.0	3.5	3.5	3.5	3.9	5.6	5.6	7.6	7.6	3.9-90kW
Max Airflow (m3/h)	1250	600	700	700	2000	2000	2250	2250	2250	700-16,000
DCIM Section										
Local Display	Touch Screen	Touch Screen	Touch Screen	Touch Screen	Touch Screen	Touch Screen	Touch Screen	Touch Screen	Touch Screen	Touch Screen
Remote Access	Web Access	Web Access	Web Access	Web Access	Web Access	Web Access	Web Access	Web Access	Web Access	Web Access /
Reporting Protocol	Modbus-TCP	Modbus-TCP	Modbus-TCP	Modbus-TCP	Modbus-TCP	Modbus-TCP	Modbus-TCP	Modbus-TCP	Modbus-TCP	Modbus-TCP / SNMP(Opt.)
UPS Mgmt.	Yes	Yes	Yes	Yes	Yes	Yes	Yes	Yes	Yes	Yes
Cooling Mgmt.	Yes	Yes	Yes	Yes	Yes	Yes	Yes	Yes	Yes	Yes
Temp. & Hum. Sensor	Yes	Yes	Yes	Yes	Yes	Yes	Yes	Yes	Yes	Yes
Fire Sensor	Smoke	Smoke	Smoke	Smoke	Smoke	Smoke	Smoke	Smoke	Smoke	Smoke
Water Sensor	Yes	Yes	Yes	Yes	Yes	Yes	Yes	Yes	Yes	Yes
Door Sensor	Front/Rear	Front/Rear	Front/Rear	Front/Rear	Front/Rear	Front/Rear	Front/Rear	Front/Rear	Front/Rear	Front / Rear
Security Section										
Access Control	RFID/Finger/PIN	RFID/Finger/PIN	RFID/Finger/PIN	RFID/Finger/PIN	RFID/Finger/PIN	RFID/Finger/PIN	RFID/Finger/PIN	RFID/Finger/PIN	RFID/Finger/PIN	RFID/Finger/PIN
Video Surveillance	Optional	Optional	Optional	Optional	Optional	Optional	Optional	Optional	Optional	Optional
Fire Fighting Section										
Fire Extinguisher	FM200 Rack Module (Opt.)	FM200 Rack Module (Opt.)	FM200 Rack Module (Opt.)	FM200 Rack Module (Opt.)	FM200 Rack Module (Opt.)	FM200 Rack Module (Opt.)	FM200 Rack Module (Opt.)	FM200 Rack Module (Opt.)	FM200 Rack Module (Opt.)	FM200 Rack Module (Opt.)
Early Detection	Vesda (Opt.)	Vesda (Opt.)	Vesda (Opt.)	Vesda (Opt.)	Vesda (Opt.)	Vesda (Opt.)	Vesda (Opt.)	Vesda (Opt.)	Vesda (Opt.)	Vesda (Opt.)

Notes:

- PDU can be customized with intelligent type and different sockets.
- Other configuration is accepted to customize per project requirements.
- All models comes with one (01) brush frame between hot and cold aisle inside the cabinet.
- All models including ATM-03N & ATM-03W features R-OCVNF42 vertical cable organizers.

(*) Multivoltage 110-240VAC available under request.

Technical Data | US Power - 208V/2P/50~60Hz | 208V/3P/50~60Hz

Product Model	ATM-03N	ATM-03W	ATM-06E	ATM-06M	ATM-06T	ATM-06F	ATM-06K	ATM-10S	ATM-10G	Configured
Space for IT-U	18U	18U	25U	26U	28U	34U	34U	32U	32U	<= 10 * 42U
Power for IT-kW	2.0	2.4	3.0	3.5	3.5	5.0	5.0	7.0	7.0	<= 15kW/Rack
Redundancy	N	N	N	N	N	N	N	N	N	N / N+1 / 2N
Width -mm	600	600	600	600	600	900	900	900	900	Per Definition
Depth -mm	1100	1100	1100	1200	1200	1200	1200	1200	1200	1200
Height -mm	1200	1590	2000	2000	2000	2000	2000	2000	2000	2000
Weight -kg	166	180	310	362	352	501	511	505	515	Per Definition
IP Level	IP55	IP55	IP55	IP55	IP55	IP55	IP55	IP55	IP55	IP55
Input Power	110-120V/ 1P/60Hz	208-240V/ 2P/60Hz	208-240V/ 2P/60Hz	208-240V/ 2P/60Hz	208-240V/ 2P/60Hz	208-240V/ 2P/60Hz	208-240V/ 2P/60Hz	208-240V/ 2P/60Hz	208-240V/ 2P/60Hz	208-240V/ 2P/60Hz or 200-230V/ 3P/50-60Hz
Breaker Size	16A	32A	63A	63A	63A	63A	63A	63A	63A	Per Definition
Power Section										
UPS -kVA	3.0	6.0	6.0	6.0	6.0	6.0	6.0	10.0	10.0	3kVA - 200kVA
UPS Type	Rack	Rack	Rack	Rack	Rack	Rack	Rack	Rack	Rack	Rack / Modular
Standard Battery	12V/9AH 16Pcs	12V/9AH 16Pcs	12V/9AH 16Pcs	12V/9AH 16Pcs	12V/9AH 16Pcs	12V/9AH 16Pcs	12V/9AH 16Pcs	12V/9AH 16Pcs	12V/9AH 16Pcs	<= 4hours backup time
Surge Protection	√	√	√	√	√	√	√	√	√	Per Definition
Power Panel	√	√	√	√	√	√	√	√	√	Per Definition
PDU	Basic 8 Slots	Basic 8 Slots	Basic 16 Slots	Basic 16 Slots	Basic 16 Slots	Basic 16 Slots	Basic 16 Slots	Basic 16 Slots	Basic 16 Slots	Basic / Smart(Opt.)
Cooling Section										
Cooling Type	Fan Ventilation	Packaged DX	Packaged DX	Package DX	Split DX	Split DX	Packaged DX	Split DX	Packaged DX	Packaged DX / Split DX / Chilled Water
Mount Type	Top	Top	Top	Rack	Rack	Row	Row	Row	Row	Row / Rack / Top
Capacity-kW	2.0	3.5	3.5	3.5	3.9	5.6	5.6	7.6	7.6	3.9-90kW
Emergency Ventilation	√	√	√	√	√	√	√	√	√	√
DCIM Section										
Local Display	Touch Screen	Touch Screen	Touch Screen	Touch Screen	Touch Screen	Touch Screen	Touch Screen	Touch Screen	Touch Screen	Touch Screen
Remote Access	Web Access	Web Access	Web Access	Web Access	Web Access	Web Access	Web Access	Web Access	Web Access	Web Access / Email / SMS(Opt.)
Reporting Protocol	Modbus-TCP	Modbus-TCP	Modbus-TCP	Modbus-TCP	Modbus-TCP	Modbus-TCP	Modbus-TCP	Modbus-TCP	Modbus-TCP	Modbus-TCP / SNMP(Opt.)
UPS Mgmt.	Yes	Yes	Yes	Yes	Yes	Yes	Yes	Yes	Yes	Yes
Cooling Mgmt.	Yes	Yes	Yes	Yes	Yes	Yes	Yes	Yes	Yes	Yes
Temp. & Hum. Sensor	Yes	Yes	Yes	Yes	Yes	Yes	Yes	Yes	Yes	Yes
Fire Sensor	Smoke	Smoke	Smoke	Smoke	Smoke	Smoke	Smoke	Smoke	Smoke	Smoke
Water Sensor	Yes	Yes	Yes	Yes	Yes	Yes	Yes	Yes	Yes	Yes
Door Sensor	Front/Rear	Front/Rear	Front/Rear	Front/Rear	Front/Rear	Front/Rear	Front/Rear	Front/Rear	Front/Rear	Front / Rear
Security Section										
Access Control	RFID/Finger/PIN	RFID/Finger/PIN	RFID/Finger/PIN	RFID/Finger/PIN	RFID/Finger/PIN	RFID/Finger/PIN	RFID/Finger/PIN	RFID/Finger/PIN	RFID/Finger/PIN	RFID/Finger/PIN
Video Surveillance	Optional	Optional	Optional	Optional	Optional	Optional	Optional	Optional	Optional	Optional
Fire Fighting Section										
Fire Extinguisher	FM200 Rack Module (Opt.)	FM200 Rack Module (Opt.)	FM200 Rack Module (Opt.)	FM200 Rack Module (Opt.)	FM200 Rack Module (Opt.)	FM200 Rack Module (Opt.)	FM200 Rack Module (Opt.)	FM200 Rack Module (Opt.)	FM200 Rack Module (Opt.)	FM200 Rack Module (Opt.)
Early Detection	Vesda (Opt.)	Vesda (Opt.)	Vesda (Opt.)	Vesda (Opt.)	Vesda (Opt.)	Vesda (Opt.)	Vesda (Opt.)	Vesda (Opt.)	Vesda (Opt.)	Vesda (Opt.)

Notes:

- PDU can be customized with intelligent type and different sockets.
- Other configuration is accepted to customize per project requirements.
- All models comes with one (01) brush frame between hot and cold aisle inside the cabinet.
- All models including ATM-03N & ATM-03W features R-OCVNF42 vertical cable organizers.

OmniLite

One Solution 