

# Innovative full MODULAR PDU



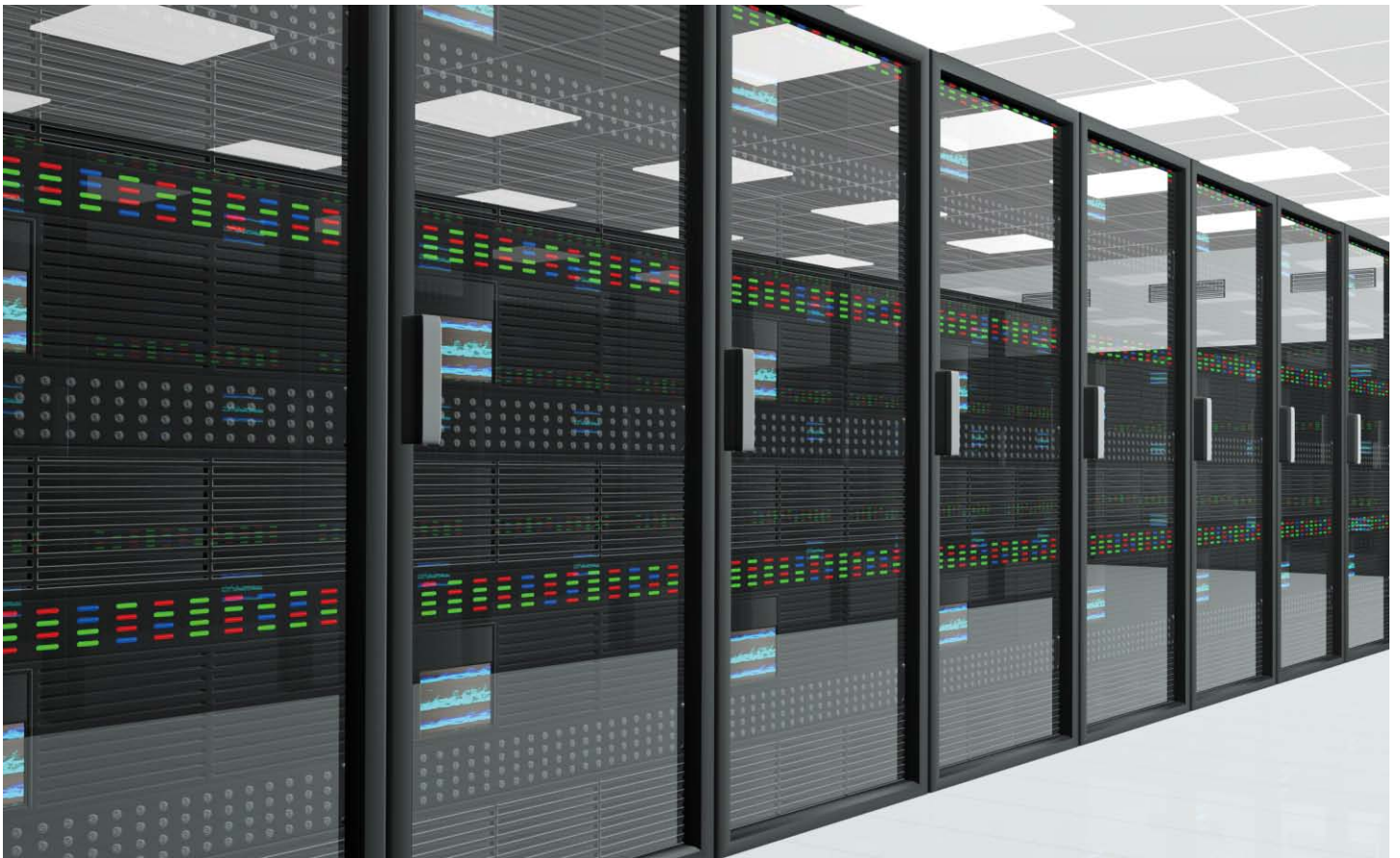
FLEXIBLE · RELIABLE · DURABLE

## PRODUCT OVERVIEW

The world's most innovative intelligent Modular Power Distribution Units, MPDU, is designed to improve uptime and energy efficiency while reducing carbon footprint and operating costs.

Based on the concept of SUM (Sustainable, Upgradeable & Maintainable), **OMNILITE** exclusive hot-swap design allows quick and easy replacement without affecting the power supply to IT equipments.

By changing the Controller, you can also get a MPDU plus version which named ZPDU. Replacing of the output modules allows you to upgrade a monitored PDU to a switched one.



## How you benefit?



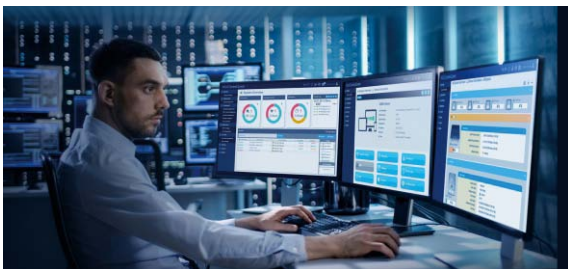
### Designed for high availability

- Hot-swappable and upgradeable monitoring features allow users to repair or upgrade the PDU without power interruption thus increase the online time of IT devices.
- Secure cords with patented locking outlets to prevent accidental plug falling.



### Optimized energy and capacity management

- Quickly determine exactly where energy is being used. To simplify load balancing and reveal locations where spare power capacity is.
- Saving energy by turn-off idle servers.
- Provide on-the-spot status and help cut cooling costs.



### Simplified integration with management tools

- Integration with OMNILITE Manager software to simplify implementation and change management translating to real cost savings.
- SNMP v3 and Modbus support.
- Support for integration with higher level data centre management software provided by third parties.



### Compatibility with racks and power chain

- Compatible with all industry racks and can be pre-installed in major brand racks to reduce installation costs and save implementation time.
- Available in all major global voltage and amperage combinations typically used in data centre or remote sites.



# PRODUCT FEATURES



**HD** **High resolution LCD display**  
2.8" FTF color LCD with high resolution displays crystal clear and rich information of PDU data and configuration.

**±1%** **Billing grade accuracy**  
Accurate kWh metering function measures actual energy usage for charge-back billing.

**Environmental monitoring**  
Optional plug-and-play environmental sensors alert potential threats which could cause downtime.

**Daisy-Chain**  
Enables multiple MPDUs to share the same network thus to save IP resources.

**Upgradable & hot-swap controller**  
The Controller can be replaced or upgraded (to a ZPDU) without the need to power down your rack.

**A↔B** **Replaceable & scalable output modules**  
Meet the needs of developing technologies and changing business.

**Flush mount low profile design**  
Low profile magnetic circuit breaker and slim chassis save valuable space in the rack.

**Flexible mounting options**  
Pre-installed button or brackets mounting for vertical MPDUs installation into the rack.

**Cable retention clip**  
Effectively prevent downtime caused by accidental cable fall out.

**Various outlets available**  
Built-to-Order options available for additional configuration needs like UK, Schuko, Australia or even mixed receptacles.

**Configurable color**  
Color-coded Chassis or outlet configurable color including red, blue, yellow, orange etc are available on request.

**High-density power distribution**  
Fewer PDUs with more outlets in the same space to support increasing data center power needs.



# PRODUCT FEATURES

MPDU Features	A series	B series	C series	D series
<p><b>PDU level power metering and monitoring</b></p> <ul style="list-style-type: none"> <li>● PDU level power measurements (V, A, kVA, kWh, PF).</li> <li>● Phase level power measurements (V, A, kVA, kWh, PF).</li> <li>● Circuit breaker level current measurements.</li> <li>● High-accuracy, billing-grade metering capabilities.</li> <li>● Event log record / view.</li> <li>● User-defined alarm thresholds &amp; notifications.</li> </ul>	●	●	●	●
<p><b>Outlet level switching</b></p> <ul style="list-style-type: none"> <li>● Remote On / Off power control by individual outlet.</li> <li>● User-defined power-on delay to individual outlet.</li> <li>● Last Known State Power-on.</li> </ul>			●	●
<p><b>Outlet level energy metering</b></p> <ul style="list-style-type: none"> <li>● Outlet-level power measurements (A, VA, pf).</li> <li>● Outlet-level watt-hour energy metering (kWh).</li> <li>● Outlet-level alarm thresholds &amp; notifications.</li> </ul>		●		●
<p><b>Environmental monitoring</b></p> <ul style="list-style-type: none"> <li>● Plug &amp; Play environmental sensors including temperature &amp; humidity.</li> <li>● Customizable alarm thresholds and notifications.</li> </ul>	●	●	●	●
<p><b>Circuit breaker status monitoring</b></p> <ul style="list-style-type: none"> <li>● Real-time breaker ON / OFF status monitoring and alarm</li> </ul>	●	●	●	●
<p><b>Network management</b></p> <ul style="list-style-type: none"> <li>● Featured network management and alerting capabilities supporting HTTP, HTTPS, Telnet, SSL, SNMP v1 / v2c / v3, NTP, SMTP.</li> <li>● Daisy chain up to 4 rack MPDU's.</li> </ul>	●	●	●	●

# Modular PDU<sup>+</sup>

ZPDU is an upgraded PDU version by changing the hot-swappable controller and the outlet modules which comes with more capabilities, features and better security.

## Maximize control

- Group outlets for remote reboot, power measurement information across a single ZPDU.
- Multiple user group levels and outlet access permissions.
- Proactive overload protection.



## Detect a wide range of environmental conditions

- Every OMNILITE ZPDU is designed to accommodate up to 5 external sensor probes with user customizable alarms and notification.
- Extended Sensor box is available for more sensor probes.



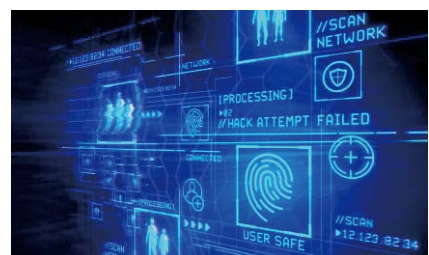
## Trending and power reports

- View Logs for user access, discovery, user actions, and alarms for trouble shooting.
- Record / view / report historical data and graph to understand where your energy is going.



## Enhance security

- Strong encryption, passwords, and advanced authorization options including IPv6, TLS, Radius, syslog, MAC filtering, LDAP / S, and Active Directory.
- Zebra Security & OMNILITE Manager Security support.





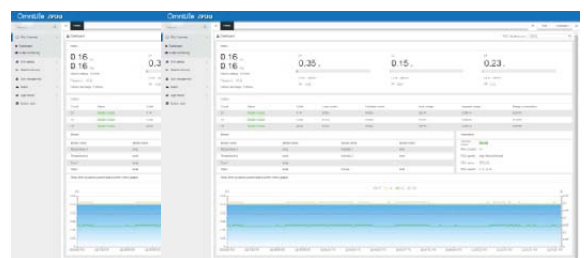
# SMART INTEGRATION FOR YOU

OMNILITE MPDU or ZPDU provides users with local display, web interface, OMNILITE manager software or 3rd part DCIM to monitor and manage all PDUs.

Home	Phase L1	Sensors
Type: ZPDU (D)	U: <b>228.5V</b> I: <b>4.45A</b>	T1: 29°C H1: 64%
192.168.1.192	Apparent Power: <b>1.02KVA</b>	T2: 33% H2: 64%
Address:1	Power Factor: <b>0.68</b>	Door: <b>Open</b>
Version: 6.14.14.14	Apparent Energy: <b>37.3KWh</b>	Smoke: Normal
		Water: Normal
2019-12-19 11:29	2019-12-19 11:29	2019-12-19 11:29

## Local LCD display

Remove the risk of overload when deploying or moving critical IT equipment through a local crystal clear LCD display, offering better capacity management in addition to reliable distribution.



## Build-in web interface

- Monitors PDUs parameters via web browser with no dedicated software required.
- Simultaneous view of up to 4 MPDUs / 10 ZPDUs.



## OMNILITE Manager

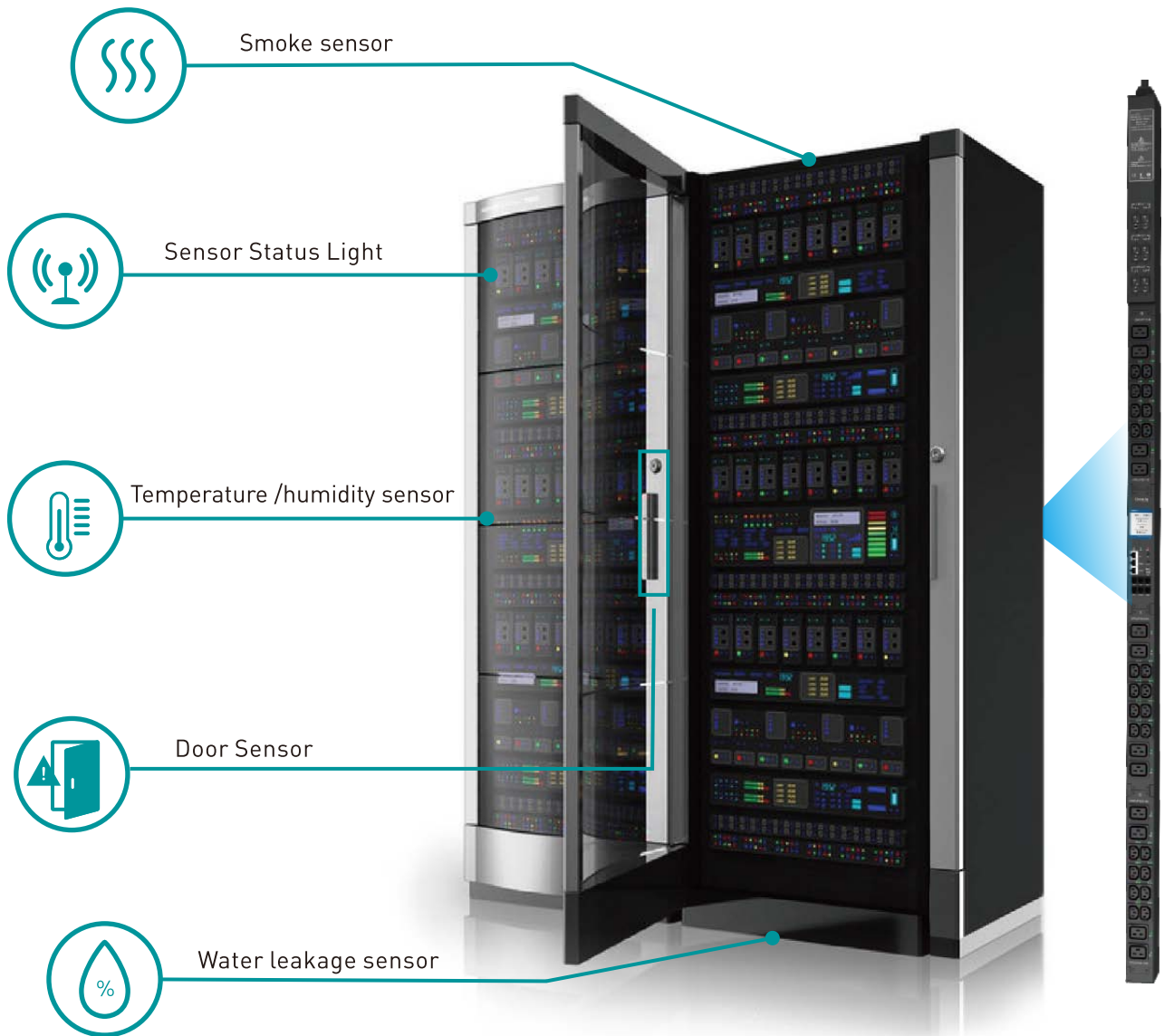
Enable you to manage thousands of PDUs with a combined dashboard view, management, consolidated alerts & reporting.



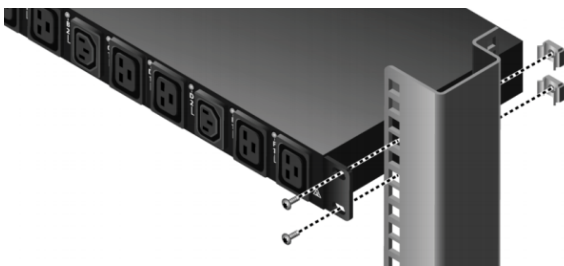
## DCIM integration

Integrate your OMNILITE MPDU/ZPDU to communicate with existing DCIM or BMS solution through SNMP or standard Modbus interface.

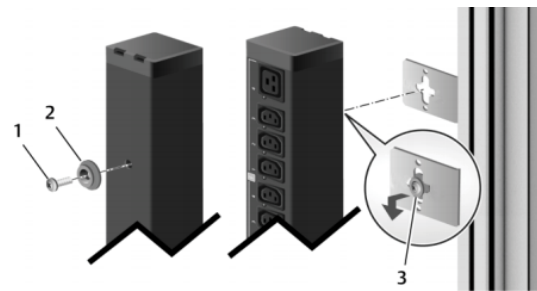
# Fitting & Installation



## Flexible Installation



Side bracket installation



Toolless button installation



